

Blockhouse modules are built at our factory and delivered to site for installation in a day. Our units are designed for maximum comfort and aesthetic appeal, they have a low impact on the environment in which they are placed and have been approved by various nature & eco-developments.



2,4m (W) x 3m (L)
2,8m (H) at the pitch
per module

FROM **R113 925**
inc VAT



QUALITY



ECO-FRIENDLY



MOVABLE



INSULATED

EXTRAS

Architectural Drawings
Council Submissions
Engineers Certificate
Electrical COC

SPECIFICATIONS

Frame Structure	75mm x 50mm Welded Steel Rectangle Tube	Wall Insulation	63mm Cavity Batt
Exterior Walls	0,5mm Colorplus IBR Sheeting & Flashing	Roof Insulation	100mm ISO Therm
Interior Walls	Moisture Board	Ceiling	40mm ISO Foam
Interior Floors	Fiber Cement	Aluminium Doors	LowE Glazing
Outside Landing	Composite Decking	Interior Paint	Duram
		Roof Screws & Fasteners	ZAP

ELECTRICS

(1 module)

DB Board

Interior | 4 x Down Lights

Exterior | 1 x Outside Light

2 x Double Plug & USB

1 x Light Switch

OPTIONS

External wall paint finish & colors

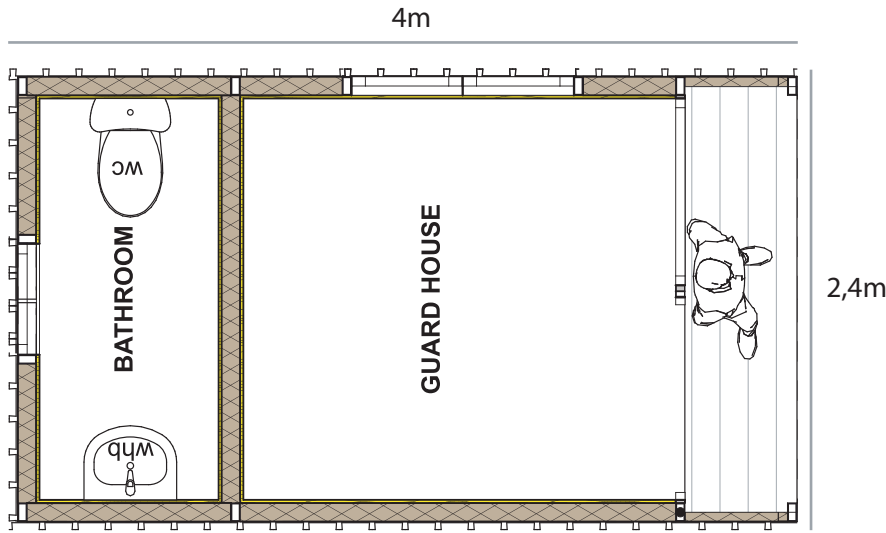
Roof colors

Various fabrics and timber finishes on furniture

Window & door colors

Laminate floor options

FLOOR PLAN



CLIENT PREPARATION

Prepared & Level Surface

Connection of unit to plumbing & electrical grid

Check mobile home requirements with local council

Check truck and crane access

OPTIONS (UNFURNISHED)

	SIZE	DIMENSIONS	Price (ex VAT)	Price (incl VAT)
Gatehouse 1 Module	7sqm	3m x 2.4m	R99 065	R113 925
Gatehouse 1 Module (Incl Bathroom)	9sqm	4m x 2.4m	R135 587	R155 925

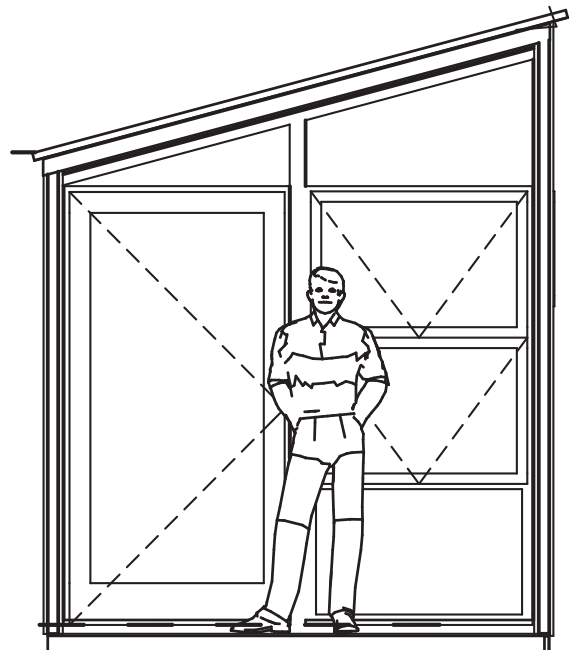
WHAT'S INCLUDED

- Lighting, Switch & Plug Points ✓
- 30L Electric Geyser per Bathroom ✓
- DB Board ✓
- Sanitaryware ✓
- Tiled Bathroom ✓

EXTRAS

- Wallpaper
- Airconditioning
- Kitchen Appliances
- Solar
- Foundation/
Concrete Landing Blocks
- Architectural Drawings for Developments/
Approval
- Galvanizing for Coastal
Environments
- Wi-Fi
- Septic Tank
- Decking

ELEVATION



DELIVERY & DEPOSIT

Lead times are 6 - 8 weeks from payment depending on factory space at the time. We require a deposit of 80% upon signing the build contract and 20% after inspection and before delivery to site. The detailed module inventory will form part of the annexures along with the relevant material specifications, certificates & warranties.