

Blockhouse modules are built at our factory and delivered to site for installation in a day. Our units are designed for maximum comfort and aesthetic appeal, they have a low impact on the environment in which they are placed and have been approved by various nature & eco-developments.



6m (W) x 6m (L)  
2,8m (H) at the pitch

FROM **R486 600**  
incl VAT



QUALITY



ECO-FRIENDLY



MOVABLE



INSULATED

#### EXTRAS

- Architectural Drawings
- Council Submissions
- Engineers Certificate
- Electrical COC

### SPECIFICATIONS

<b>Frame Structure</b>	75mm x 50mm Welded Steel Rectangle Tube	<b>Wall Insulation</b>	63mm Cavity Batt
<b>Exterior Walls</b>	0,5mm Colorplus IBR Sheeting & Flashing	<b>Roof Insulation</b>	100mm ISO Therm
<b>Interior Walls</b>	Moisture Board	<b>Ceiling</b>	40mm ISO Foam
<b>Interior Floors</b>	Fiber Cement	<b>Aluminium Doors</b>	LowE Glasing
<b>Outside Landing</b>	Composite Decking	<b>Interior Paint</b>	Duram
		<b>Roof Screws &amp; Fasteners</b>	ZAP

#### ELECTRICS

(2 modules)

DB Board

- Interior | 4 x Strip Lights
- Exterior | 1 x Outside Light
- 2 x Double Plug & USB
- 1 x Light Switch

#### OPTIONS

External wall paint finish & colors

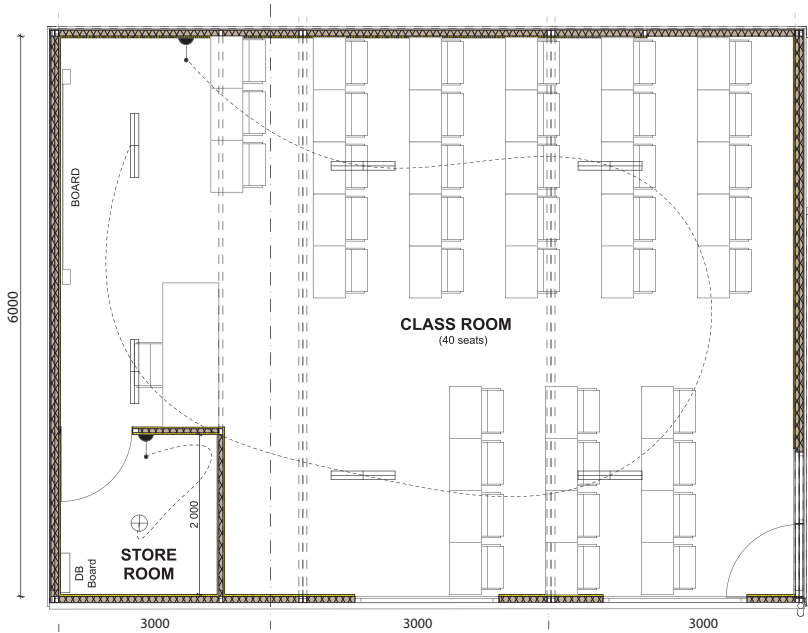
Roof colors

Various fabrics and timber finishes on furniture

Window & door colors

Laminate floor options

# FLOOR PLAN



## CLIENT PREPARATION

Prepared & Level Surface

Connection of unit to plumbing & electrical grid

Check mobile home requirements with local council

Check truck and crane access

## OPTIONS

Unfurnished Options (Excl BIC's)	No. Modules	Size	Dimensions	Price (ex VAT)	Price (incl VAT)
Open Class	2	36 sqm	6m x 6m	R422 604	R486 600
Class & Store Room	3	54 sqm	9m x 6m	R586 957	R675 000

## WHAT'S INCLUDED

Lighting, Switch & Plug Points ✓

DB Board ✓

## EXTRAS

Wallpaper & Airconditioning

Solar & Kitchen Appliances

Foundation/  
Concrete Landing Blocks

Architectural Drawings for  
Developments/Approval

Galvanizing for  
Coastal Environments

Wi-Fi & Septic Tank

