

Blockhouse modules are built at our factory and delivered to site for installation in a day. Our units are designed for maximum comfort and aesthetic appeal, they have a low impact on the environment in which they are placed and have been approved by various nature & eco-developments.



6m (W) x 6m (L)  
2,8m (H) at the pitch

FROM **R461 725**  
incl VAT

#### EXTRAS

- Architectural Drawings
- Council Submissions
- Engineers Certificate
- Electrical COC



QUALITY



ECO-FRIENDLY



MOVABLE



INSULATED

### SPECIFICATIONS

|                        |  |                                    |                  |
|------------------------|--|------------------------------------|------------------|
| <b>Frame Structure</b> | 75mm x 50mm<br>Welded Steel Rectangle Tube | <b>Wall Insulation</b>             | 63mm Cavity Batt |
| <b>Exterior Walls</b>  | 0,5mm Colorplus IBR Sheeting<br>& Flashing | <b>Roof Insulation</b>             | 100mm ISO Therm  |
| <b>Interior Walls</b>  | Moisture Board                             | <b>Ceiling</b>                     | 40mm ISO Foam    |
| <b>Interior Floors</b> | Fiber Cement                               | <b>Aluminium Doors</b>             | LowE Glasing     |
| <b>Outside Landing</b> | Composite Decking                          | <b>Interior Paint</b>              | Duram            |
|                        |  | <b>Roof Screws &amp; Fasteners</b> | ZAP              |

#### ELECTRICS

(2 modules)

DB Board

Interior | 4 x Strip Lights  
Exterior | 1 x Outside Light  
2 x Double Plug & USB  
1 x Light Switch

#### OPTIONS

External wall paint finish & colors

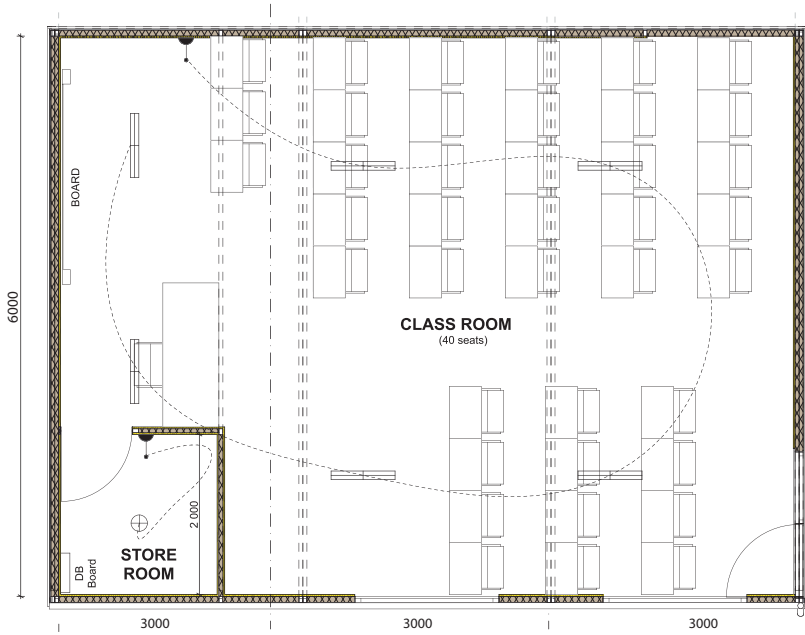
Roof colors

Various fabrics and timber finishes on furniture

Window & door colors

Laminate floor options

# FLOOR PLAN



## CLIENT PREPARATION

Prepared & Level Surface

Connection of unit to plumbing & electrical grid

Check mobile home requirements with local council

Check truck and crane access

## OPTIONS

| Unfurnished Options (Excl BIC's) | No. Modules | Size   | Dimensions | Price (ex VAT) | Price (incl VAT) |
|----------------------------------|-------------|--------|------------|----------------|------------------|
| Open Class                       | 2           | 36 sqm | 6m x 6m    | R401 500       | R461 725         |
| Class & Store Room               | 3           | 54 sqm | 9m x 6m    | R605 000       | R695 750         |

## WHAT'S INCLUDED

Lighting, Switch & Plug Points ✓

DB Board ✓

## EXTRAS

Wallpaper & Airconditioning

Solar & Kitchen Appliances

Foundation/  
Concrete Landing Blocks

Architectural Drawings for  
Developments/Approval

Galvanizing for  
Coastal Environments

Wi-Fi & Septic Tank

