

Blockhouse modules are built at our factory and delivered to site for installation in a day. Our units are designed for maximum comfort and aesthetic appeal, they have a low impact on the environment in which they are placed and have been approved by various nature & eco-developments.



2,4m (W) x 3m (L)  
2,8m (H) at the pitch  
per module

FROM **R145 475**  
inc VAT



QUALITY



ECO-FRIENDLY



MOVABLE



INSULATED

#### EXTRAS

Architectural Drawings  
Council Submissions  
Engineers Certificate  
Electrical COC

### SPECIFICATIONS

<b>Frame Structure</b>	75mm x 50mm Welded Steel Rectangle Tube	<b>Wall Insulation</b>	63mm Cavity Batt
<b>Exterior Walls</b>	0,5mm Colorplus IBR Sheeting & Flashing	<b>Roof Insulation</b>	100mm ISO Therm
<b>Interior Walls</b>	Moisture Board	<b>Ceiling</b>	40mm ISO Foam
<b>Interior Floors</b>	Fiber Cement	<b>Aluminium Doors</b>	LowE Glazing
<b>Outside Landing</b>	Composite Decking	<b>Interior Paint</b>	Duram
		<b>Roof Screws &amp; Fasteners</b>	ZAP

#### ELECTRICS

(1 module)

DB Board

Interior | 4 x Down Lights

Exterior | 1 x Outside Light

2 x Double Plug & USB

1 x Light Switch

#### OPTIONS

External wall paint finish & colors

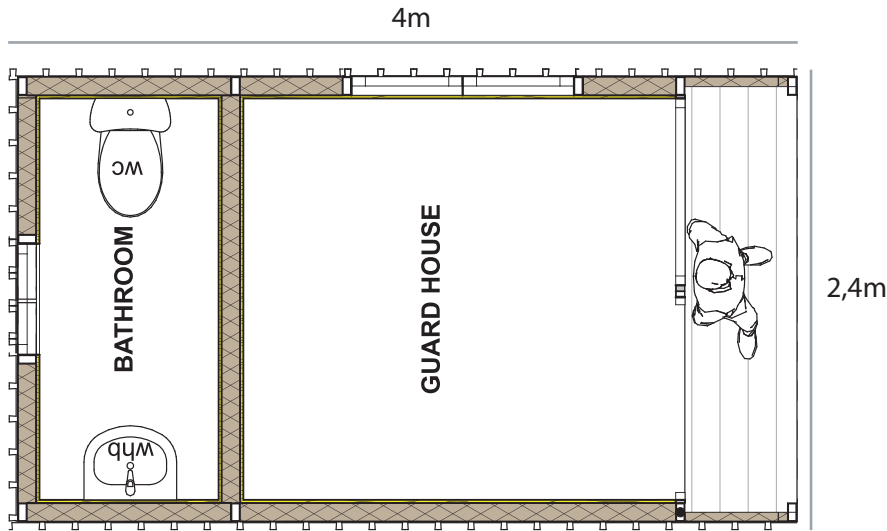
Roof colors

Various fabrics and timber finishes on furniture

Window & door colors

Laminate floor options

## FLOOR PLAN



## CLIENT PREPARATION

Prepared & Level Surface

Connection of unit to plumbing & electrical grid

Check mobile home requirements with local council

Check truck and crane access

## OPTIONS

Unfurnished Options (Ex BIC's)	No. Modules	Size	Dimensions	Price (ex VAT)	Price (incl VAT)
Room	1	7 sqm	3m x 2,4m	R126 500	R145 475
1 Room + Bathroom	2	9 sqm	4m x 2,4m	R148 500	R170 775

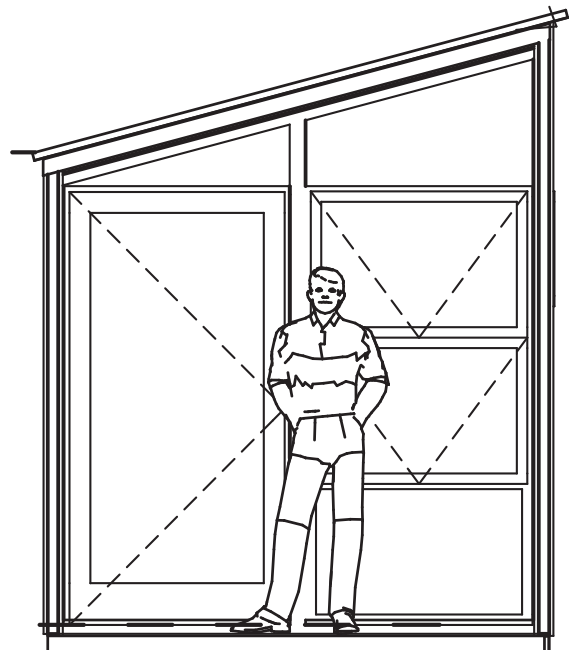
## WHAT'S INCLUDED

- Lighting, Switch & Plug Points ✓
- 30L Electric Geyser per Bathroom ✓
- DB Board ✓
- Sanitaryware ✓
- Tiled Bathroom ✓

## EXTRAS

- Wallpaper
- Airconditioning
- Kitchen Appliances
- Solar
- Foundation/  
Concrete Landing Blocks
- Architectural Drawings for Developments/  
Approval
- Galvanizing for Coastal  
Environments
- Wi-Fi
- Septic Tank
- Decking

## ELEVATION



## DELIVERY & DEPOSIT

Lead times are 6 - 8 weeks from payment depending on factory space at the time. We require a deposit of 80% upon signing the build contract and 20% after inspection and before delivery to site. The detailed module inventory will form part of the annexures along with the relevant material specifications, certificates & warranties.